

Worksheet 1

A. Tick (✓) the correct option.

1. If you see a person falling down and getting hurt,

- a. ask him to get up fast.
- b. ask him why he was careless.
- c. help him to get up if he is in a position to do so.

2. In case a person's clothes catch fire,

- a. ask him to run fast.
- b. pour water on the body.
- c. cover him with a blanket to cut off air supply.

3. A sprain is,

- a. broken bone in the body
- b. torn tissue around joint
- c. small dust particle in the eye

B. Write T for True or F for False.

- 1. Only a doctor can give first aid.
- 2. When your nose bleeds, blow it.
- 3. To treat minor burns, a paste of baking soda and water can be used if antiseptic lotion is not available.
- 4. We should throw water on a petrol fire.
- 5. In case of a dog bite, wash the area with soap and water immediately.

Teacher's Signature: _____

Remarks: _____

Worksheet 2

Answer these questions.

1. What would you do in case of a minor burn?

2. What is a splint? What is its use?

3. What not to do in case of a fire caused by petrol?

4. Write first aid for chemical burns.

5. Write first aid for fractures.

6. Write first aid for snake bites.

Teacher's Signature: _____

Remarks: _____

Worksheet 1

A. Fill in the blanks.

1. Anything that occupies space and has weight is called _____.
2. A chemical change indicates a _____ change in the substance.
3. Liquids that can dissolve in each other are called _____.
4. The impurities that settle down at the bottom are called _____.
5. Physical change indicate changes in the _____.

B. Write T for true and F for false statements.

1. Solids such as sugar and salt are insoluble in water. _____
2. All liquids can dissolve in water. _____
3. Sand is insoluble in water. _____
4. The liquid in which a solvent dissolves is called a solute. _____
5. Soluble solutes settle down to form sediment. _____

C. Write the difference between chemical and physical changes.

chemical changes	physical changes

Teacher's Signature: _____

Remarks: _____

Worksheet 2

Answer these questions.

1. Name the methods by which you can separate sand from water.

2. What are solutes and solvents?

3. What is a solution?

4. What is a chemical change? Give an example.

Teacher's Signature: _____

Remarks: _____

Worksheet 1

A. Circle the correct answers.

1. A group of organs together make up (an organ system / a tissue / a cell).
2. The skull is made up of (8 / 22 / 14) bones.
3. The backbone is made up of 33 small bones called (bone marrows / ribs / vertebrae).
4. There are (12 / 13 / 14) pairs of bow-shaped ribs which form a cage and enclose the heart and the lungs.

B. Name the parts of the skeleton that protect these organs.

1. Brain _____
2. Spinal cord _____
3. Heart _____
4. Lungs _____

C. Think and answer.

1. While travelling on a motorcycle, one must wear a helmet. Why?

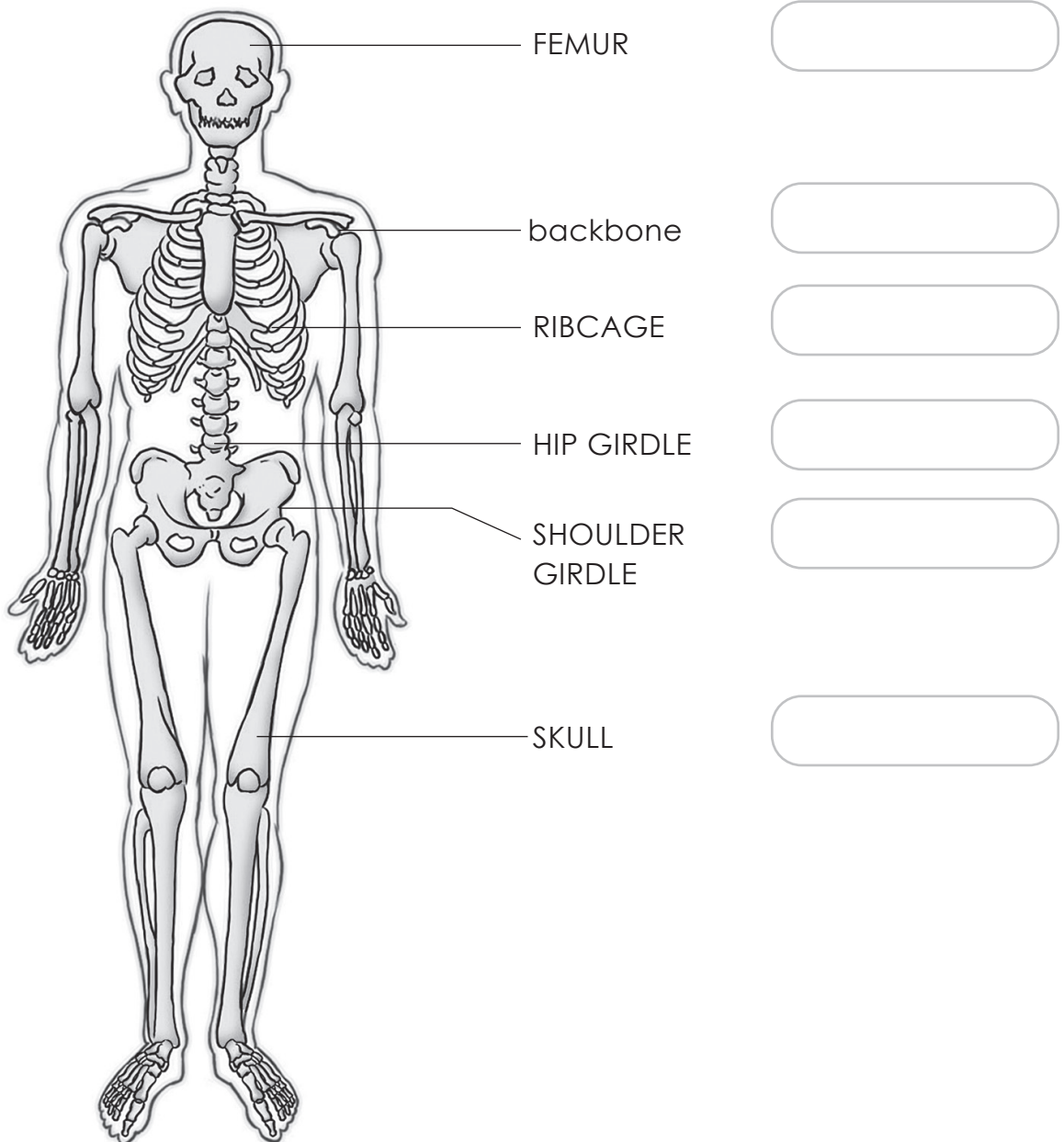
2. What would happen if our backbone were made of one single long bone?

Teacher's Signature: _____

Remarks: _____

Worksheet 2

Some parts of the human skeletal system are incorrectly labelled. Label these parts correctly.



Teacher's Signature: _____

Remarks: _____

Worksheet 1

A. Write T for True or F for False.

- 1. Our brain is protected by our backbone. _____
- 2. body posture is controlled by the cerebrum. _____
- 3. Reflex actions are controlled by our heart. _____
- 4. The cerebellum coordinates the actions of the muscles and makes them work together. _____
- 5. The motor nerves bring messages from the sense organs to the brain or the spinal cord. _____

B. Fill in the blanks.

- 1. The largest part of the brain is the _____.
- 2. The nerves that carry messages to the brain and from the brain are called _____ nerves.
- 3. Ears help us hear _____.
- 4. Nerves are _____ structures that act as a messenger between the brain and the body.
- 5. _____ protect ourselves from shocks and injuries.

C. Complete the series.

- 1. sensory nerves : message : : motor nerves : _____
- 2. memory : cerebrum : : heartbeat : _____
- 3. cerebellum : muscles : : cerebrum : _____

Teacher's Signature: _____

Remarks: _____

Worksheet 2

Answer these questions.

1. What are reflex actions?

2. How is our brain protected from injuries?

3. What does the nervous system consist of?

4. What are nerves?

5. Write the name of all three kinds of nerves.

6. Name the different parts of the brain. What work does each part do?

Teacher's Signature: _____

Remarks: _____

Worksheet 1

A. Write T for True or F for False statement.

- 1. APPLE, INSAT-1B, INSAT-2A, INSAT-2B, IRS-1A and Oceansat are all Indian satellites. _____
- 2. Valentina Tereshkova of America was the first woman to go into space. _____
- 3. Communication satellites are a type of satellite. _____
- 4. The American spacecraft Sputnik 1 was the first spacecraft to land on the moon. _____
- 5. Communication satellites can give us early warnings of weather. _____

B. Circle the correct answers.

- 1. (Sputnik / AAPLE) is not an Indian satellite.
- 2. The satellites that send messages from one country to another are called (weather / communication) satellites.
- 3. Aryabhata, the first Indian satellite, was launched in (1974 / 1975).
- 4. (Major Yuri Gagarin / Neil Armstrong) is the first man in the world to go into space.

C. Think about a spacecraft and write any four features you would like to have in your spacecraft in the blanks shown below.

- 1. _____
- 2. _____
- 3. _____
- 4. _____

Worksheet 2

A. Tick (✓) the correct answer.

1. The first artificial satellite launched by India in 1975 was

a. Sputnik I.

b. Aryabhata.

c. Charaka.

d. INSAT.

2. A person who goes into space is called an

a. astronomer.

b. astronaut.

c. astrologer.

d. agriculturist.

3. Rakesh Sharma first went to space in

a. 1982.

b. 1983.

c. 1984.

d. 1985.

4. He is the first man to go into space.

a. Michael Collins.

b. Neil Armstrong.

c. Major Yuri Gagarin.

d. Rakesh Sharma.

B. Think and answer.

Make a list of things you would need to take on a trip to the moon.

Teacher's Signature: _____

Remarks: _____

Worksheet 1

A. Write the difference between Humanoids and Humans.

Humanoids	Humans

B. Match the following.

- 1. Artificial intelligence
- 2. Self-driving cars
- 3. Humanoids
- 4. Smart speakers
- 5. Futuristic space travel
- i. for space tourism
- ii. voice activated speakers
- iii. move safely with little or human input
- iv. look and act like humans
- v. machines that think and act like humans

C. Write some applications of Artificial intelligence that you use in your everyday life.

Teacher's Signature: _____

Remarks: _____

Worksheet 2

Answer the following questions.

1. What is Artificial intelligence?

2. What are humanoids?

3. What is futuristic space travel?

4. What are self-driving cars?

5. What are smart speakers?

Teacher's Signature: _____

Remarks: _____