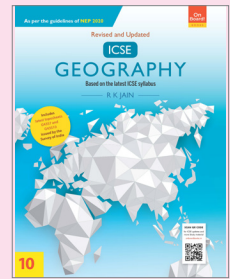


# ICSE Geography

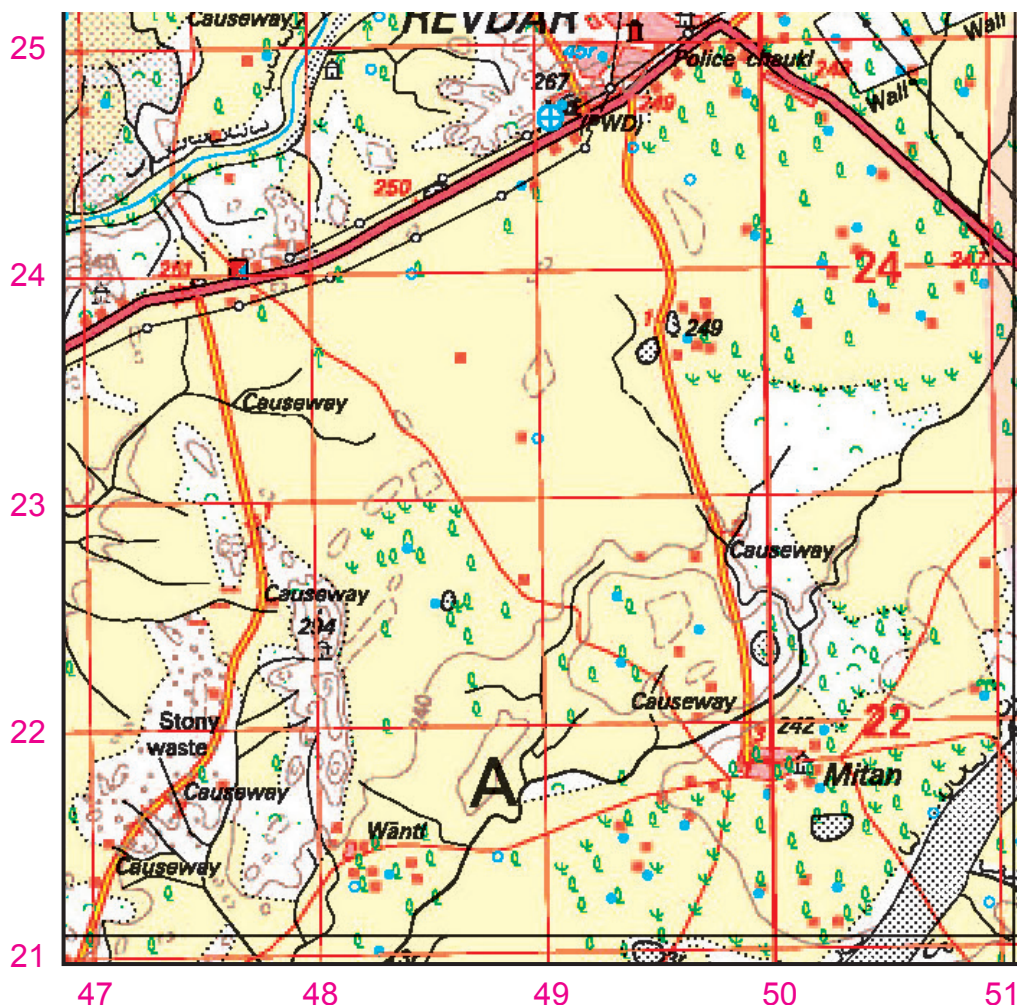
## Class 10



## Multiple-Choice Questions

### CHAPTER 3: Study of Topographical Sheet No. G43S10

For questions 1, 2 and 3 refer to the map extract given below.

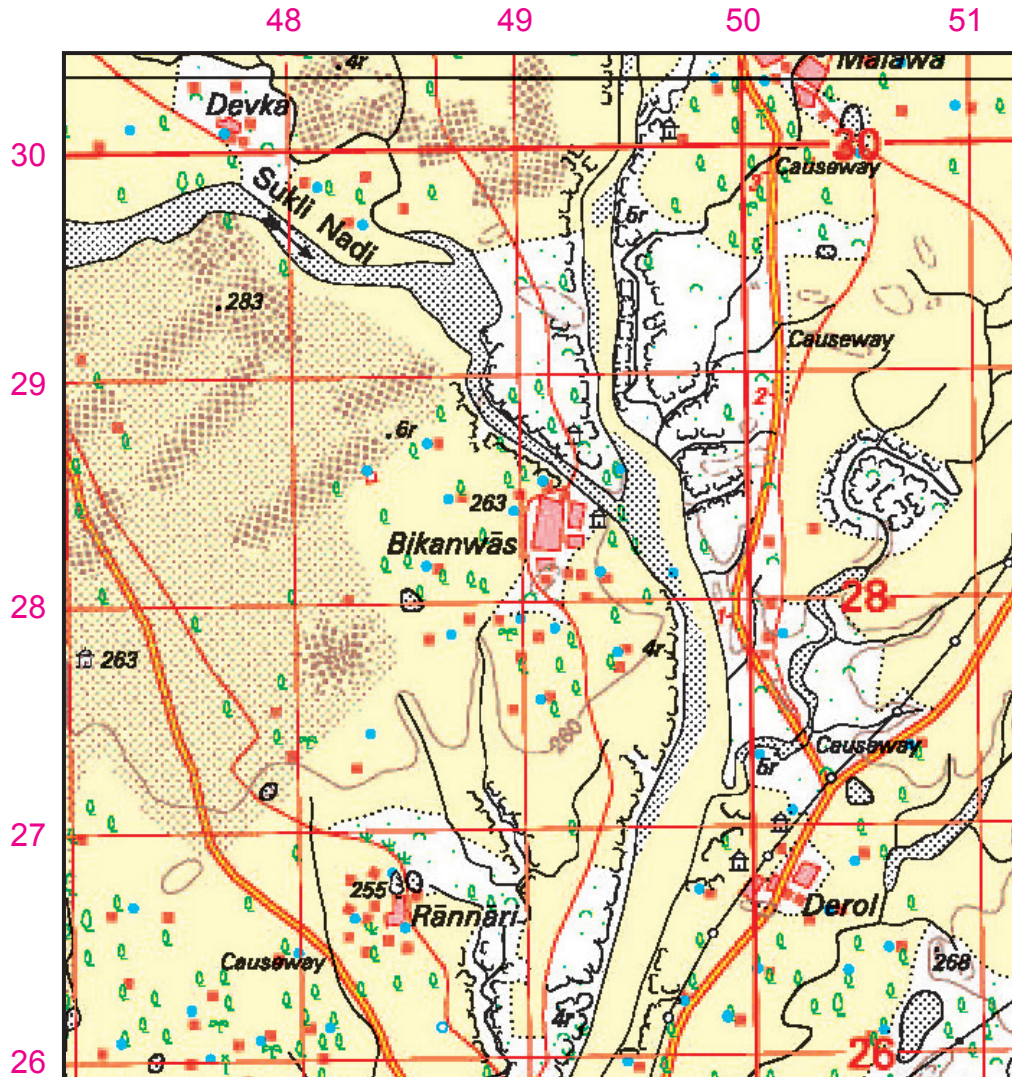


1. The black vertical line along easting 51 is a/an
  - a. line of latitude.
  - b. line of longitude.
  - c. Easting.
  - d. Northing.

Answer: (b) line of longitude.

2. A Causeway is a
- bridge.
  - feature resembling a bridge.
  - raised metalled road.
  - all of these.
- Answer: (c) raised metalled road.
3. The chief occupation of the people living in the area shown in the above map extract is
- mining.
  - trade.
  - cultivation of crops.
  - fishing.
- Answer: (c) cultivation of crops.

For questions 4 and 5 refer to the map extract given below.

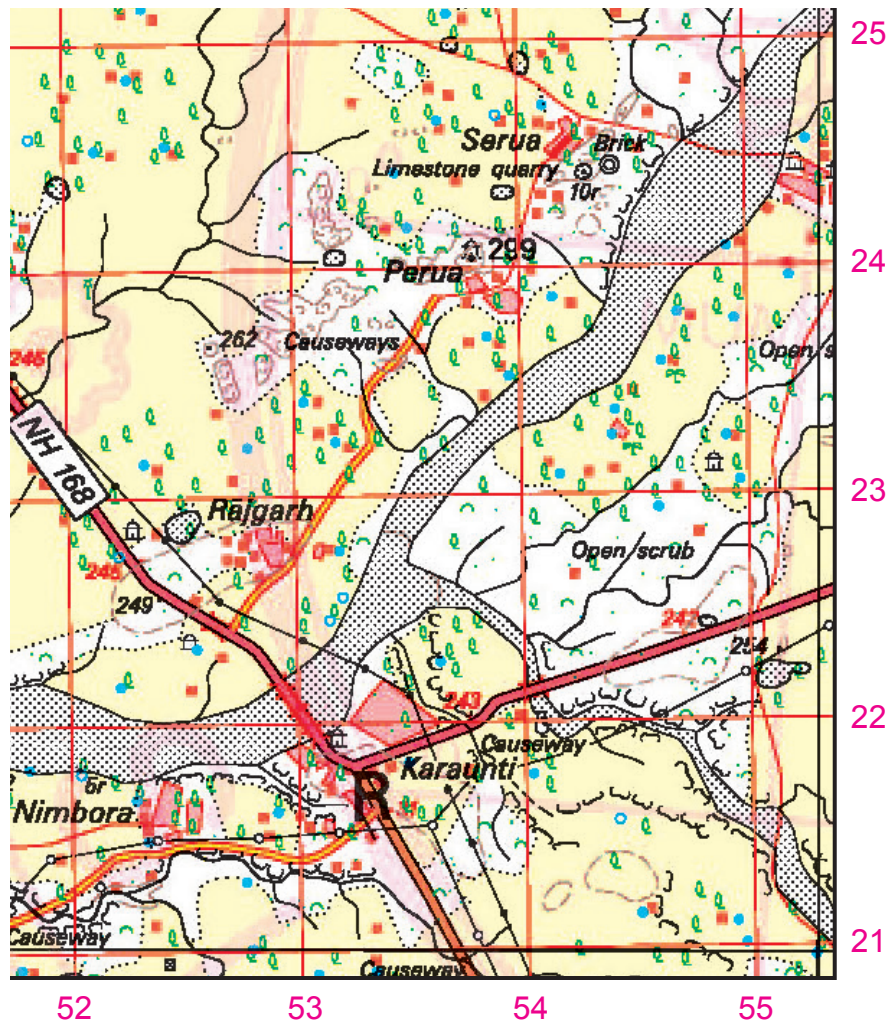


4. The compass direction from Bikanwas to Derol is
- South-West.
  - North.
  - South-East.
  - West.
- Answer: (c) South-East.
5. The black curved lines to the north of the Revdar represents
- dry streams.
  - sand dunes.



- c. broken land.
  - d. broken ground formed by scarcity of water when water gets evaporated.
- Answer: (d) broken ground formed by scarcity of water when water gets evaporated.

For questions 6, 7 and 8 refer to the map extract given below.



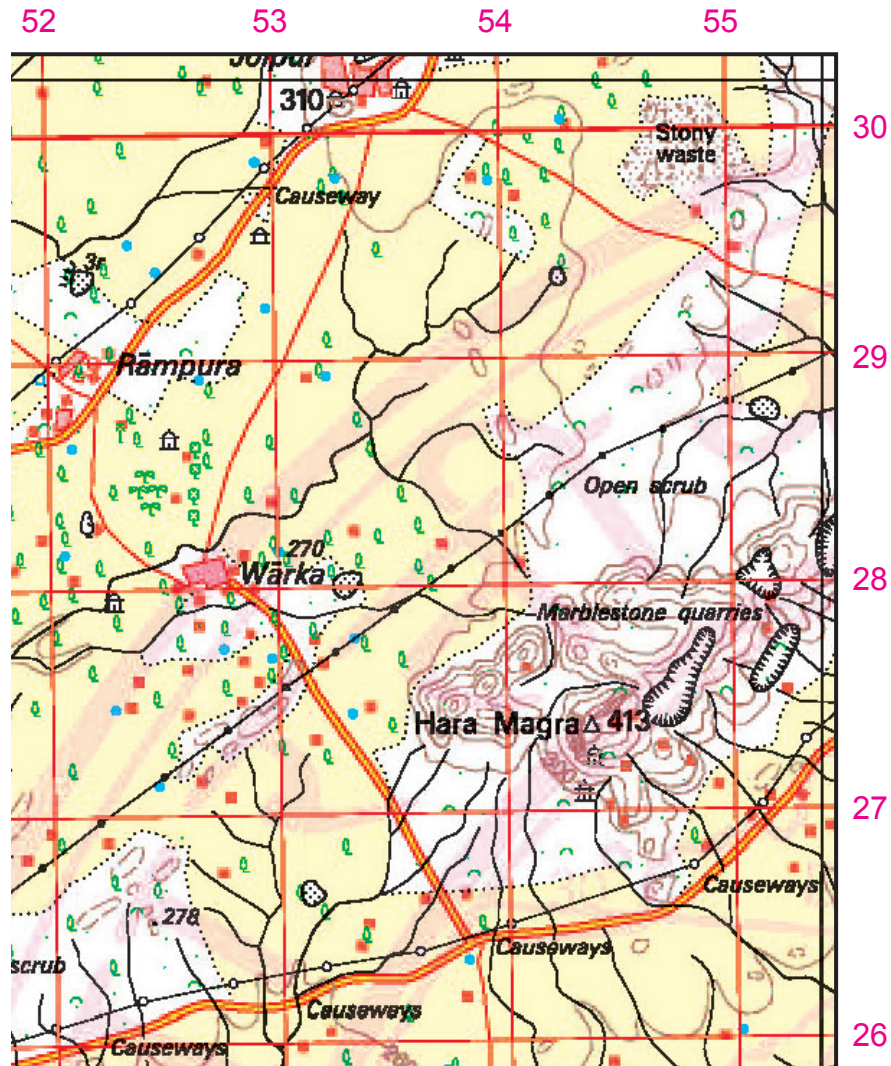
6. A limestone quarry is a place where
  - a. limestone is baked.
  - b. limestone is extracted.
  - c. quicklime from limestone is prepared.
  - d. none of these.

Answer: (b) limestone is extracted.
7. The type of road transport shown in grid square 5123 is
  - a. District Road.
  - b. State Highway.
  - c. National Highway.
  - d. None of these.

Answer: (c) National Highway.
8. The type of settlement pattern in grid square 5222 is
  - a. nucleated.
  - b. isolated.
  - c. scattered.
  - d. none of these.

Answer: (a) nucleated.

For questions 9 and 10 refer to the map extract given below.



9. The drainage pattern in grid square 5427 is
- a. Dendritic.
  - b. Radial.
  - c. Trellised.
  - d. Intermittent.

Answer: (b) Radial.

10. The four-figure grid reference of 'Open Scrub' in the 'north-east' corner of the map is

- a. 2854.
- b. 5428.
- c. 5248.
- d. 5842.

Answer: (b) 5428.