

WORKSHEET 2

CHAPTER 10 – NERVOUS SYSTEM

A. Name the following.

1. The parts of autonomic nervous system.
2. The membranes covering the brain and spinal cord.
3. The part of the brain which controls the activities of internal organs.
4. The part of the brain which is concerned with muscular coordination in the body.
5. The lower part of brain which contains reflex centre.

B. Choose the correct option.

1. The part of the brain that coordinates musculoskeletal movements is
a. medulla oblongata. b. cerebrum. c. cerebellum. d. pons.
2. The control centre for respiration is
a. cerebrum. b. cerebellum. c. medulla oblongata. d. corpus callosum.
3. The two hemispheres of the cerebrum are connected by
a. corpus luteum. b. corpus callosum. c. cerebellum. d. pons.
4. A reflex are in man is best described as movement of stimuli from
a. receptor cell, sensory nerve, relaying neuron, effector muscles.
b. receptor cell, efferent nerve, relaying neuron, muscles of the body.
c. receptor cell, spinal cord, motor neuron, relaying neuron.
d. receptor cell, synapse, motor neuron, relaying neuron.
5. The ventral root ganglion of the spinal cord contains cell bodies of the
a. motor neuron. b. sensory neuron.
c. intermediate neuron. d. associated neuron.

C. State whether the following statements are True or False.

1. Heart beat is controlled by cerebrum of the brain.
2. White matter contains cell bodies of neurons.
3. The element needed for the transmission of nerve impulse is sodium.
4. Salivation at the smell of food is a natural reflex.
5. Cranial nerves arise from the brain.

D. Fill in the blanks.

1. _____ fluid provides protection and nourishment to the cells of brain.
2. The meninges of the brain include _____, _____ and _____

Name:

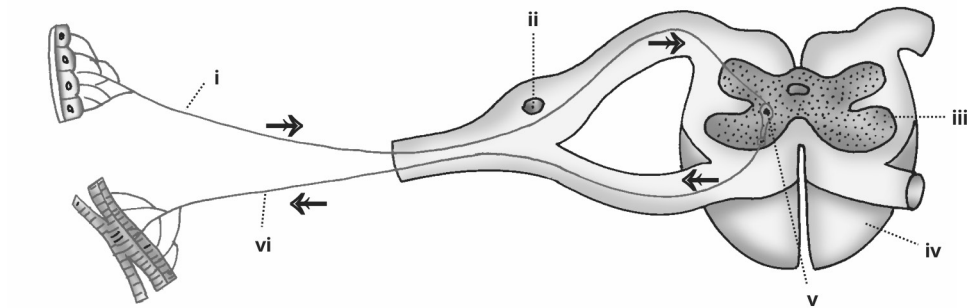
Teacher's signature:

Class: X

Date:

3. The cavities of the brain are called _____
4. Junction of two neurons is called _____
5. _____ is the largest part of the brain.

E. The diagram given below is representation of a certain phenomenon pertaining to nervous system. Answer the questions below.



1. Name the phenomenon that is being depicted.
2. Give the technical term for the point of contact between the two nerve cells.
3. Name the parts **i**, **ii**, **iii**, and **iv**.
4. Write the functions of parts **v** and **vi**.
5. How does the arrangement of neurons in the spinal cord differ from that of the brain?

ANSWERS

WORKSHEET 2

A. Name the following.

1. Sympathetic and parasympathetic nervous system.
2. Meninges
3. Medulla oblongata
4. Cerebellum
5. Medulla oblongata

B. Choose the correct option.

1. c.
2. c.
3. b.
4. a.
5. a.

C. State whether the following statements are True or False.

1. False
2. False
3. True
4. False
5. True

D. Fill in the blanks.

1. Associative
2. pia mater, arachnoid and dura mater
3. ventricles
4. synapse
5. Cerebrum

E. The diagram given below is representation of a certain phenomenon pertaining to nervous system.

Answer the questions below.

1. Reflex action
2. Synapse
3. i – Sensory neuron
ii – Dorsal ganglion
iii – Grey matter
iv – Spinal cord
4. v – Association area connects the spinal and motor neuron.
vi – Motor neuron convey messages from the spinal cord to the effector organs.
5. **Spinal cord** – Outer part contains white matter (*axon*) and inner part contains grey matter (*cyton*).
Brain – Outer part contains grey matter (*cyton*) and inner part contains white matter (*axon*).