

WORKSHEET 1

CHAPTER 10 – NERVOUS SYSTEM

A. Name the following.

1. The neuron which transmits impulses from brain to the effector organ.
2. The unit of nervous system.
3. The part of the brain that carries impulses from one hemisphere of the cerebellum to the other.
4. The part of the brain associated with the memory.
5. One neurotransmitter.

B. Fill in the blanks.

1. Brain and spinal cord are the part of _____ nervous system.
2. Increase in blood pressure of heart is caused through _____ nervous system.
3. A bundle of axons enclosed in a tubular sheath is called _____
4. Unconditioned reflex can be exemplified by _____
5. Cerebrum is the seat of _____

C. Match the items in Column A with those in Column B and write down the matching pairs.

Column A

1. Dendrons
2. Neuron
3. Afferent neuron
4. Efferent neuron
5. Acetylcholine

Column B

- a. basic unit of nervous system
- b. carries impulses towards the brain and the spinal cord
- c. carries impulses away from the brain and the spinal cord
- d. nerve impulse
- e. neurotransmitter

D. State one main function of the following.

1. Myelin sheath
2. Acetylcholine
3. Cerebrum
4. Medulla oblongata
5. Thalamus

Name:

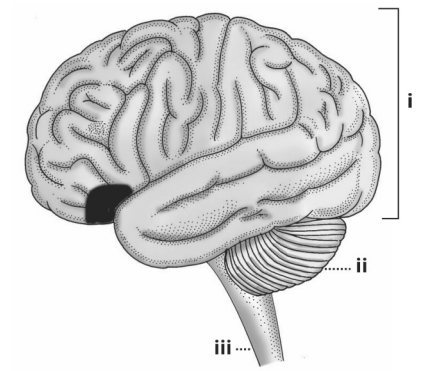
Teacher's signature:

Class: X

Date:

E. The diagram shows a section of the human brain. Study the same and answer the following questions.

1. Name the parts labelled i, ii and iii.
2. Give the main function of each of the part i, ii, and iii, respectively.
3. Name the three protective membranes covering the brain.
4. Name the basic unit of the brain.
5. How are the two hemispheres of cerebrum connected?



ANSWERS

WORKSHEET 1

A. Name the following.

1. Effector neuron
2. Neuron
3. Pons varolii
4. Cerebrum
5. Acetylcholine

B. Fill in the blanks.

1. central
2. sympathetic
3. nerve
4. touching hot plate
5. memory/reasoning/thinking

C. Match the items in Column A with those in Column B and write down the matching pairs.

1. d. 2. a. 3. b. 4. c. 5. e.

D. State one main function of the following

1. Insulates the axon.
2. Acts as a neurotransmitter.
3. Seat of memory, speech and reasoning.
4. Controls involuntary activities.
5. It is the involved in sensory and motor signal relay.

E. The diagram shows a section of the human brain. Study the same and answer the following questions.

1. **i** – Cerebrum, **ii** – Cerebellum, **iii** – Medulla oblongata
2. **i** – Cerebrum is the seat of memory, thought, reason, logic etc. It controls and coordinates the muscular movements.
ii – Controls equilibrium
iii – Controls involuntary actions like heart beat, respiration, etc.
3. Dura mater, arachnoid, pia mater
4. Neuron
5. Corpus callosum