

WORKSHEET 1

CHAPTER 8 – BACTERIA AND FUNGI – THEIR ECONOMIC IMPORTANCE

A. Name the following.

1. A denitrifying bacteria.
2. The process of conversion of ammonia into nitrites and nitrates.
3. Mass of tangled hyphae.
4. Yeast used in fermentation process.
5. A spherical bacteria which is present in clusters like bunch of grapes.

B. State whether the following statements are True or False.

1. All mushrooms are edible.
2. Yeast respire aerobically.
3. Bacteria do not possess cell wall.
4. *Rhizopus* can grow in the soil.
5. Athlete's foot is a fungal disease.

C. Fill in the blanks.

1. Rod-shaped bacteria are called _____
2. _____ is a clear yellowish liquid obtained after clotting of blood.
3. _____ is a bacteria that produces an anthrax-causing toxin.
4. _____ is a spiral-shaped bacteria.
5. A fungi used for flavouring the cheese is _____

D. Choose the correct option.

1. Which of the following is a comma-shaped bacteria?
a. *Streptococcus* b. *Lactobacillus* c. *Escherichia coli* d. *Vibrio*
2. Which of the following is a bacterial disease in plants?
a. Leaf spot of cotton b. Late blight of potatoes
c. Downy mildew in grapes d. Smut in corn
3. Cell organelle present in bacterial cell is
a. ribosome. b. mitochondria. c. Golgi body. d. all of these.
4. Bacteria responsible for curdling of milk is
a. *Streptococcus*. b. *Rhizobium*. c. *Lactobacillus*. d. *Clostridium*.
5. *Rhizopus* reproduces by
a. binary fission. b. spore formation. c. multiple fusion. d. budding.

Name:

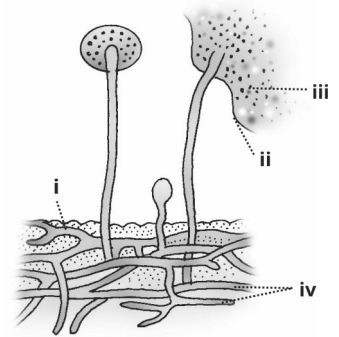
Teacher's signature:

Class: IX

Date:

E. Study the figure given alongside and answer the following questions.

1. Name the organism and the kingdom to which it belongs.
2. Label parts **i-iv**
3. Where are they commonly found?
4. Explain how these organisms obtain their nutrition.
5. How do these organisms reproduce – asexually and sexually?



ANSWERS

WORKSHEET 1

A. Name the following.

1. *Pseudomonas*
2. Nitrification
3. Mycelium
4. *Saccharomyces cerevisiae*
5. *Staphylococcus*

B. State whether the following statements are True or False.

1. False
2. False
3. False
4. False
5. True

C. Fill in the blanks.

1. *Bacillus*
2. Serum
3. *Bacillus anthracis*
4. *Leptospira*
5. *Penicillium*

D. Choose the correct option.

1. d.
2. a.
3. a.
4. c.
5. b.

E. Study the figure given alongside and answer the following questions.

1. *Rhizopus*, Kingdom – Fungi
2. i. Hyphae ii. Sporangium iii. Spore iv. Rhizoids
3. They are commonly found on moist bread and other organic matter such as fruits, vegetables kept in warm and humid places.
4. *Rhizopus* or bread mould show saprophytic mode of nutrition. The hyphae secretes certain enzymes on the organic matter which digest the food outside their bodies. Moulds then absorb the digested food through the cell wall of hyphae.
5. Asexually by mean of spores and sexual reproduction by conjugation of isogametes.