

# WORKSHEET 1

## CHAPTER 1 – CELL – THE STRUCTURAL AND FUNCTIONAL UNIT OF LIFE

### A. Name the following.

1. A dense round structure attached to chromatin fibre.
2. Pigments providing blue, violet, purple colour to various parts of the plant.
3. The part that helps in intracellular distribution of molecules, enzymes and nutrients within the cell.
4. The person who constructed the first microscope.
5. Spindle-shaped cells.

### B. State whether the following statements are True or False.

1. Chromosomes are located in genes.
2. Nucleus controls metabolism and other activities of the cell.
3. Cell wall is freely permeable to substances entering and leaving the cell.
4. Nucleolus are tangled fibrous mass inside the cell.
5. Chloroplasts are the plastids that store starch.

### C. State one major function of the following cell organelles.

1. Lysosome
2. Ribosomes
3. Golgi apparatus
4. Cytoplasm
5. Endoplasmic reticulum

### D. Match the items in Column A with those in Column B and write down the matching pairs.

#### Column A

1. Endoplasmic reticulum
2. Mitochondria
3. Centrosome
4. Chloroplast
5. Lysosome

#### Column B

- a. cell division
- b. photosynthesis
- c. respiration
- d. intracellular digestion
- e. circulatory system of the cell

Name: .....

Teacher's signature: .....

Class: ..... IX .....

Date: .....

**E. Study the figure given alongside and answer the following questions.**

1. Is this a plant cell or an animal cell?
2. Label the following parts in it.
  - a. Smooth endoplasmic reticulum
  - b. Cell wall
  - c. Vacuole
  - d. Cytoplasm
3. Name any two structures which are unique to this type of cell only.
4. Which part helps in exchange of materials in and out of the cell?
5. Which part is responsible for cellular respiration?



# ANSWERS

## WORKSHEET 1

### A. Name the following.

1. Centrosome
2. Anthocyanins
3. Cytoplasm
4. Anton von Leeuwenhoek
5. Muscle cells

### B. State whether the following statements are True or False.

1. False
2. True
3. True
4. False
5. False

### C. State one major function of the following cell organelle.

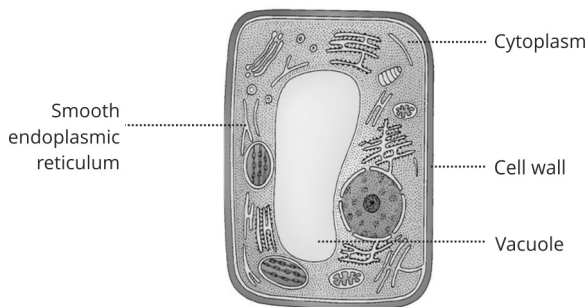
1. Lysosomes are responsible for intracellular digestion.
2. Ribosomes are sites of protein synthesis.
3. Golgi apparatus helps in the secretion of mucus, enzymes and hormones.
4. Cytoplasm helps in intracellular (within the cell) distribution of molecules, enzymes and nutrients.
5. Endoplasmic reticulum helps in intracellular transport (distribution of material from one part of the cell to other parts).

### D. Match the items in Column A with those in Column B and write down the matching pairs.

1. e.
2. c.
3. a.
4. b.
5. d.

### E. Study the figure given below and answer the following questions.

1. Plant cell
- 2.



3. Cell wall and large vacuole
4. Cell/Plasma membrane
5. Mitochondria