

Activities

- A** Study this image. Frame six sentences to describe the people, things or actions in it. Ensure that each sentence has a preposition in it and that you use a preposition only once.

◀ Conceptual Understanding, Application



Example

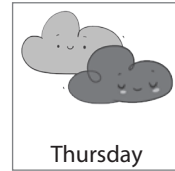
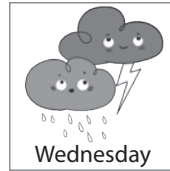
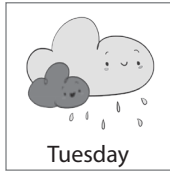
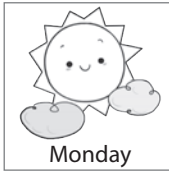
*There is a vase **on** the floor. There are tulips **in** the vase.*

- B** Work in groups of six. Take turns to play a game or enact any funny scene for three minutes and give a running commentary on it. ◀ Experiential Learning

!*: All writing tasks to be done in the notebook

- C** Look at these images and draft a weather forecast. Then, compare your report with that of two others. Explain why each of you chose specific verbs and adjectives.

◀ **Application**



Now, complete this passage with the correct modals.

◀ **Conceptual Understanding**

There are a few clouds in the sky now but they _____ clear in a few hours, and the rest of the day _____ be bright and sunny. However, we _____ expect a drizzle tomorrow, which _____ well turn into a downpour on Wednesday. It _____ be wise to carry an umbrella or raincoat if you are stepping out. Thursday _____ continue to be cloudy, though it _____ not rain. With the sun and clouds all set to play hide-and-seek through the day, Friday _____ mostly be hot and humid. It is likely that this weather _____ continue into the weekend. The weekend _____ see light winds, but nothing that _____ alarm us. On the whole, it looks like it _____ be a pleasant week for us.

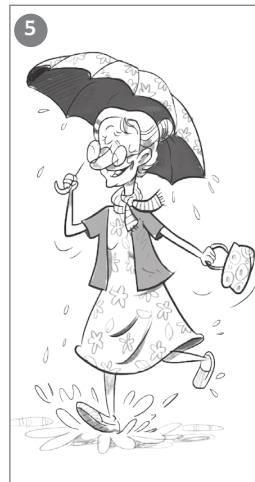
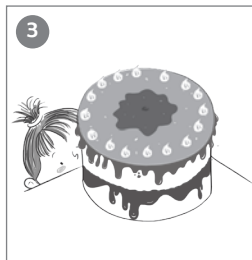
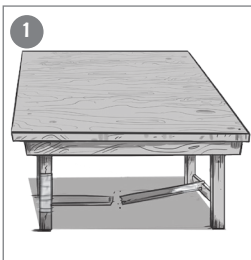
- D** Work in groups of five and play *All in One!* One of you will enact a word or a phrase, and the others will take turns to frame an interrogative, exclamatory, imperative or declarative sentence based on it. Play at least five rounds so that everyone in the group gets a chance to enact and frame each kind of sentence. Use a different word or phrase in each round.

◀ Creativity, Application

Example *DOG: Is this a dog? What a cute dog that is!
This is my dog. Do not tease that dog.*

- E** Look at these pictures. Describe each using three appropriate adjectives in the correct order.

◀ Application



- F** Write a brief paragraph on the importance of English.

◀ Critical Thinking, Communication

- G** Work in groups to make a poster on *Say no to plastic.*

◀ Collaboration, Creativity

- H Work in groups of three and take turns to frame sentences about the same fact using *for*, *since* and *from*. You may use these details or come up with your own.

◀ Conceptual Understanding, Application

1. shop open
2. wait at bus stop
3. talk on the phone
4. stay in a hotel
5. discount sale
6. children playing

Example

rain – It has rained **for** an hour. It has been raining **since** morning. It rained **from** 10 a.m. to 11 a.m.

- I Look at these mathematical properties and their examples. Define or explain them using the *if*- clause or *when* clause.

◀ Multidisciplinary Approach

1. Commutative property of addition: $12 + 5 = 5 + 12$
2. Property of zero: $99 \times 0 = 0$
3. Property of zero: $99 \div 0 = 99$

Example

$$33 + 0 = 33$$

If we add zero to a number, we get the number itself as the sum.

When zero is added to a number, the sum is the number itself.

- J Draw and explain one of these phenomena.


◀ Multidisciplinary Approach

1. water cycle
2. photosynthesis
3. metamorphosis

- K** Look at these pictures and read the information about each. Frame three relative clauses about the information using the words within brackets.

◀ Conceptual Understanding, Application

1



(WHICH, WHO, THAT)

Taj Mahal – one of the seven wonders of the world – in Agra emperor Shah Jahan – loved his wife very much – built it in her memory
made of white marble – brought from Rajasthan


2

Dr Verghese Kurien – birthday observed as National Milk Day – called ‘Father of India’s white revolution’
his ‘billion-litre idea’ – made India world’s largest milk producer
Varghese Kurien – founder of AMUL hired as a manager – later founded Gujarat Co-operative Milk Marketing Federation Ltd.



(WHOSE, THAT, WHOM)

Example



*Chimpanzees, **which** are the closest human relatives in the animal world, have 98 per cent of human genes.*

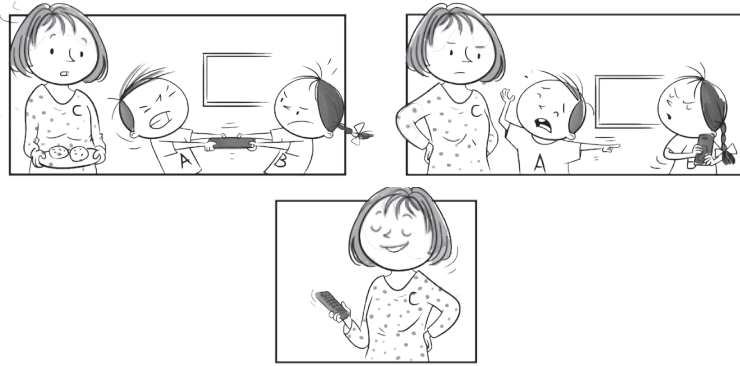
*Chimpanzees are the animals **which** are the closest relatives of humans in the animal world, with 98 per cent similarity in genes.*

PHOTO CREDITS: PIXABAY; WIKIMEDIA COMMONS (William Yardley, CC BY-SA 4.0); PIXABAY

- L** Work in groups of three. Look at these pictures and do as directed.

◀ Application, Critical Thinking

1. Mime this situation. Then, report the conversation as C.



2. Role-play this situation. Then, report the conversation as C.



3. Enact this situation. Take turns to report one another's dialogue.



Projects

- A** Work in groups of five and make a first-aid kit. Then, describe and demonstrate the first aid to be administered in these situations.

◀ Life Skills, Experiential Learning

- One of you will call out the things to do, check or ensure first.
 - One of you will call out the steps or instructions.
 - One of you will be the 'patient' and another will show how to help her/him.
 - One of you will call out the things that should NOT be done.
1. Choking
 2. Burns – minor and major
 3. Fracture
 4. Bleeding
 5. Animal sting or bite

- B** Hold an election in class for any three posts.

◀ Multidisciplinary Approach, Experiential Learning, Collaboration

- Plan the details.
- Discuss the steps.
- Allot duties.
- Ensure that you include these stages: announcement, issue of voter cards, nomination, candidate speech, voting, counting, declaration, swearing-in.
- Refer to your Social Science lessons for help.

- C Look at this picture of a neighbourhood and do as directed.



1. Work in pairs and take turns to identify the problems and suggest solutions. Use the passive voice for the problems and the active voice for the solutions or vice versa.

◀ Problem-solving, Life Skills, Values

Example

A man is cutting the tree./A tree is being cut.

People should cover their mouth when sneezing./The mouth should be covered when sneezing.

2. Draw the same neighbourhood as it would look after the solutions are implemented.

◀ Art Integration

