



# Some Major Skills & Focus Areas

## In Communicate in English 1-5

“**Creativity** refers to new ways of seeing or doing things and includes generating new ideas, flexibility, originality, and building on others’ ideas.”

– 21st Century Skills Handbook by CBSE



### Creativity

- BK 2** pp. 12 (K), 33 (N & O), 71 (Q), 109 (A)
- BK 4** pp. 27 (B), 50 (L), 52 (D), 90 (B), 120 (L)
- BK 5** pp. 61 (N), 98 (A), 106 (M), 117 (K), 121 (E)



### Critical Thinking

- BK 1** pp. 41 (G), 52 (H), 53 (K), 77 (B), 83 (H), 96 (J)
- BK 2** pp. 29 (D), 51 (E), 54 (N), 69 (M), 91 (F), 102 (D)
- BK 5** pp. 21 (D), 58 (G), 64 (A), 69 (E), 77 (Get Set!), 87 (Get Set!), 98 (B)

### Communication

refers to the ability to express one’s opinions, desires, needs, apprehensions etc., appropriately—verbally and non-verbally.”

– 21st Century Skills Handbook by CBSE



### Collaboration

- BK 3** pp. 11 (K), 13 (O), 20 (H), 37 (Get Set!), 55 (M)
- BK 4** pp. 23 (I), 62 (M), 64 (B & C), 123 (A & C)
- BK 5** pp. 12 (I), 29 (A), 38 (O), 73-74 (Q), 83 (I), 93 (L)

“**Collaboration** is the ability to effectively work together with others.”

– 21st Century Skills Handbook by CBSE



### Communication

- BK 1** pp. 21 (J), 31 (L), 43 (L), 66 (I), 75 (L), 84 (K)
- BK 3** pp. 14 (P), 22-23 (N), 45 (P), 55 (N), 71 (R), 81 (Q), 103 (Q)
- BK 4** pp. 63 (N), 64 (A), 75 (P), 88 (P), 100 (P)

**B** Work in groups of four to do this project.

1. The following animals are in danger of dying out. If we do not act fast, they will become extinct like the dinosaurs. Find out about one of these animals.

◊ blue whale ◊ gorilla ◊ giant panda

2. The World Wildlife Fund is an international organization that works to save wildlife. Write a letter to the WWF about the animal you have chosen for your project.

◊ Why is it endangered? ◊ What can we do to save it?



**C** Work in groups of six. Make a poster on the importance of planting trees.

◊ Choose a theme like: trees give us clean air; trees reduce noise pollution; trees give shade and food to many.

◊ Draw pictures or paste photographs.

◊ Give your poster a catchy title.

◊ Write one or two sentences about the theme of the poster below the picture.

SAVE THE FORESTS

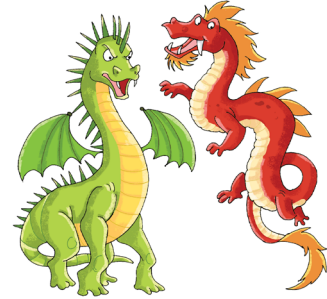


SO THE FORESTS CAN SAVE US

BK 4, p. 64

BK 5, p. 77

Dragons are legendary creatures with some features similar to reptiles. There are two main traditions of dragons – European and Chinese.



What kind of creatures do you think they are? Circle the words that you think describe them.

large friendly angry loving fierce pretty  
dangerous fire-breathing cruel affectionate

Discuss in class why you have chosen the words you circled.

**Critical Thinking** is the ability to think clearly and rationally and understand the logical connections between ideas; to analyze facts and come to a conclusion.

**F** Look at the example and join two words to make a new word. For example, lady + bird = ladybird. Colour as shown.

LADY	WATER	SUN	BALL
FOOT	FLY	FLOWER	HORSE
SEA	BUTTER	BIRD	BOARD
BOW	BLACK	MELON	RAIN

BK 1, p. 94

**Conceptual Understanding** refers to an integrated and functional grasp of ideas.



### Problem-solving

- BK 2** pp. 41 (E), 46 (Get Set!), 79 (H), 84 (C)
- BK 3** pp. 9 (F), 25 (A), 52 (D), 77 (F), 88 (E)
- BK 5** pp. 5 (Get Set!), 10 (E), 37 (L), 82 (F), 116 (J)

SKILLS – page 2

FOCUS AREAS – page 3



